

I Nearly Lost You

A Time-Travel Drama of Mother-Daughter Reconciliation and Music



90-second concept trailer (click on image)

A broke 1990s woman uses a time-traveling phone to save the daughter she gave up for adoption, but when she arrives in 2026, she discovers her grown child is now her same age, suicidal, and the only way to rescue her is to drag her back to the raw, dangerous aliveness of the '90s before the phone stops working forever.

I NEARLY LOST YOU follows a resilient mother from the 1990s who embarks on a journey to the future. The mother and daughter reunion is filled with emotional challenges and revelations as they navigate the complexities of their past and present. However, the path to reconciliation demands profound sacrifices and forces them to confront difficult choices about family, identity, and healing across time.



Lead Character: Rachel

Rachel is a street-smart and resilient woman who grew up in the 1990s, having survived a traumatic childhood through sheer determination and grit. She works hard and takes nothing for granted, embodying a survival instinct that has shaped her tough yet caring nature. Despite her strength, Rachel's vulnerability lies in her deep connection to music, which influences her emotions and decisions. Facing an impossible choice, Rachel's journey highlights the complexity of a mother's love intertwined with the challenges of reconciling her past and present.

Lead Character: Ann

Ann is the present-day daughter, grappling with loneliness, severe anxiety, and existential dread despite her privileged background. Having grown up wealthy and successful, she made the bold decision to leave corporate law and become a bartender, seeking a more meaningful life. However, Ann struggles with digital isolation, feeling disconnected despite constant online interactions. Her journey centers on a profound need for authentic human connection, which becomes even more poignant when she discovers the mother she never knew, opening the door to healing and reconciliation.



Why Now? "73% of Gen-Z report feeling alone." -Forbes

Loneliness Epidemic

73% of Gen Z report feeling alone often, with studies showing up to 80% experiencing loneliness in the past year, far exceeding rates in older generations.

Digital Isolation Problem

"Gen-Z are hyperconnected in the virtual world but socially disconnected...digital interactions have failed to replace the need to connect on an emotional level." -Forbes

Workplace & Social Impact

Gen Z also experiences higher feelings of isolation in the workplace, compounding the pervasive loneliness affecting their mental health and wellbeing.

"Loneliest Generation"

A 2024 GWI study found 80% of Gen Z felt lonely in the past 12 months. A 2022 *Psychology Today* article highlighted that 73% of Gen Z feel alone either sometimes or always. Other sources cite similar figures, with some studies showing around 73% to 79% experiencing loneliness. Gen Z has been described as the "loneliest generation."

Youth Suicide

"Suicide death rates for children and young adults aged 10 to 24 years increased by 62% from 2007 to 2021. These death rates were accompanied by steady increases in reports of suicidal thoughts and behaviors over the period of 2013 to 2023. In 2023, female and LGBTQ+ individuals were at higher risk than male individuals for each kind of suicidal behavior measured. Speculation on factors contributing to rising suicide risk includes rapidly evolving technology and the expansion of youth use of social media over this time period." - *JAMA (Journal of the American Medical Association)*

Our Story's Solution

"I Nearly Lost You" offers an authentic narrative of connection across time, addressing emotional isolation through a heartfelt mother-daughter journey and the healing power of music.

Universal Themes

Music as Healing

Raw, authentic '90s grunge music serves as a powerful tool for emotional healing and expression throughout the story.



Connection vs. Isolation

Highlights the contrast between digital disconnection and the need for genuine human relationships in a hyperconnected world.



Second Chances

Explores the profound cost and emotional weight of attempting to change the past and seek redemption.



Family Trauma

Addresses complex issues like adoption, broken homes, and the journey toward forgiveness and reconciliation.





TARGET AUDIENCE

PRIMARY AUDIENCE Ages 18-34

Seeking authentic connection stories
Dealing with family trauma/adoption
Music lovers and indie film fans

SECONDARY AUDIENCE Ages 34-54+

Lived through '90s grunge era
Nostalgia seekers
Parents relating to family themes

The Nostalgia Factor

A grainy, high-contrast black and white photograph serves as the background. It depicts a person in a dark, textured environment, possibly a forest or cave. The person's face is partially visible in profile, with their hand near their face, suggesting a contemplative or emotional state. The lighting is dramatic, with strong highlights and deep shadows, creating a moody and atmospheric effect.

The '90s grunge culture represents a powerful and largely untapped source of nostalgia for contemporary audiences. This era's authentic elements — including live music performances, the raw and gritty grunge aesthetic, pre-digital authenticity, and emotionally charged expression — create a unique atmosphere that has yet to be fully explored in nostalgia films. By tapping into this cultural moment, the film offers a fresh, genuine experience that connects deeply with both those who lived through the era and younger generations seeking a more authentic emotional connection beyond digital interactions.

Tone, Genre & Market Comparables

Film Tone

A sci-dramedy combining humor, emotion, and musical elements that deepen the narrative and character connection.



Genre

Blends magical realism, drama, and musical storytelling to explore themes of family, time travel, and healing.



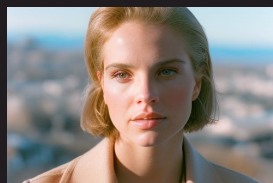
Comparable Films

Shares qualities with **About Time** (\$87M), **The Time Traveler's Wife** (\$101M), and **Yesterday** (\$153M) for time-travel and musical fusion.



Emotional Journey

Echoes the intimate mother-daughter relationship and emotional depth, reconciliation and personal growth in **Lady Bird** (\$78.9M).



Visual Style

Present Day

Clean, sharp digital cinematography captures the present-day world, emphasizing modern disconnection through sterile environments, cooler tones, and minimalist symmetrical framing to contrast with the past.



1990s Timeline

Featuring authentic film grain and lived-in locations, the 1990s scenes embrace grunge aesthetics with raw textures, saturated colors, and a nostalgic, gritty feel that reflects the era's spirit and emotional intensity.



Time Travel Sequences

Surreal and dreamlike visual effects create seamless transitions between eras, blending elements of magical realism with fluid, ethereal imagery to symbolize the emotional and temporal connection between characters.

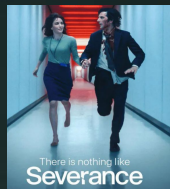


Professional Validation / Production Readiness



Roadmap Writers Coverage

Rated "RECOMMEND" for its unique melancholy and heartfelt approach, setting it apart from typical time travel dramedies with a strong emotional core. nearlylostyou.com/review



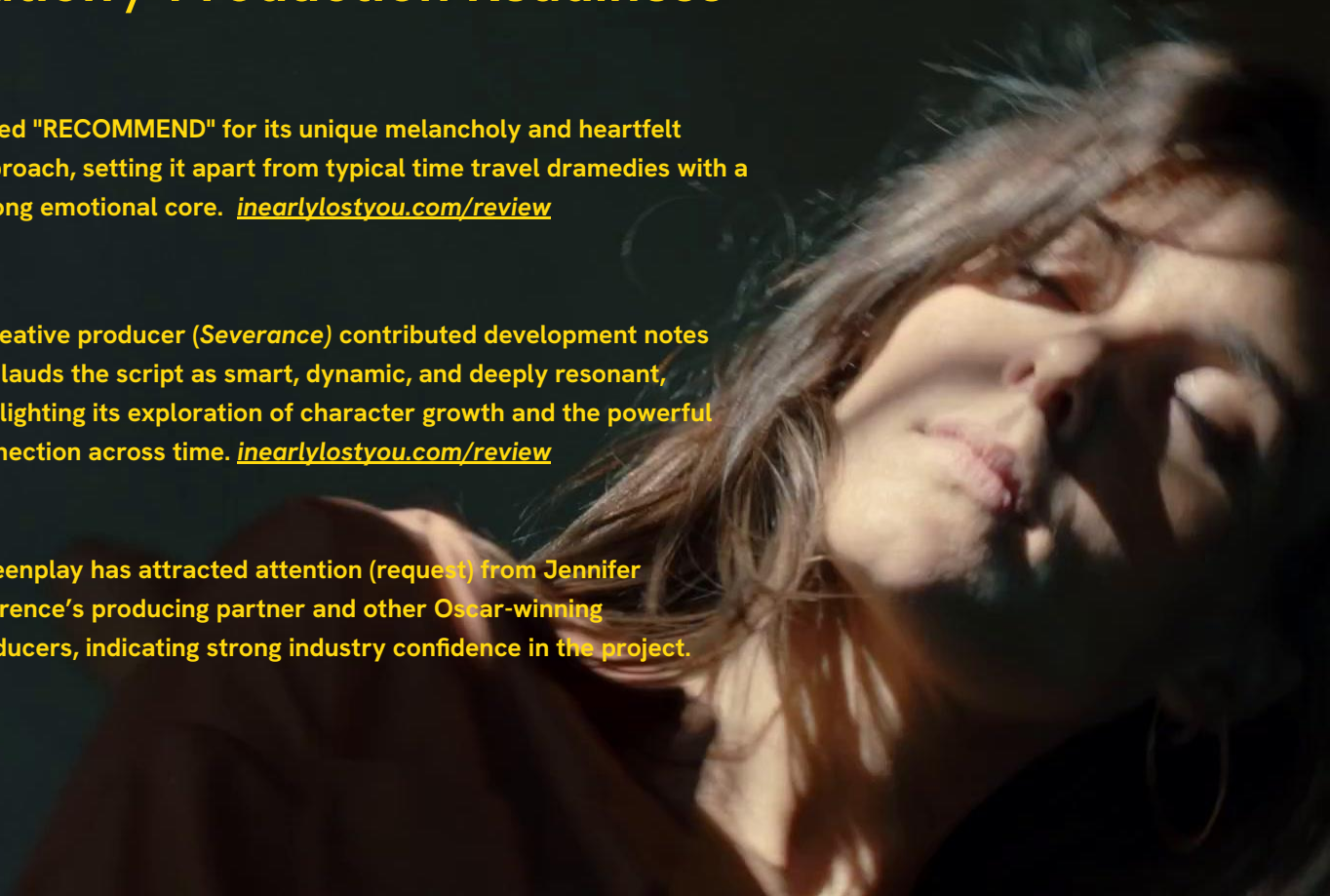
Creative Producer Development

A creative producer (*Severance*) contributed development notes and lauds the script as smart, dynamic, and deeply resonant, highlighting its exploration of character growth and the powerful connection across time. nearlylostyou.com/review



High-Profile Interest

Screenplay has attracted attention (request) from Jennifer Lawrence's producing partner and other Oscar-winning producers, indicating strong industry confidence in the project.



The Emotional Journey

Heartfelt Emotion

The film captures the raw and intimate emotions of a mother and daughter reconciling across time, emphasizing vulnerability, love, and personal growth.

Humor & Levity

Balancing the drama, the tone incorporates moments of humor and lightness, reflecting the quirky, relatable aspects of family dynamics across generations and time.

Magical Realism

Music serves as a magical realism element, triggering time travel and emotional transformation, blending the real and surreal to deepen the narrative impact.

Authentic & Nostalgic

Rooted in the '90s grunge culture, the tone evokes nostalgia through authentic music, gritty visuals, and a lived-in aesthetic that resonates with multiple generations.



MUSIC INTEGRATION

not just soundtrack — plot device

MUSIC AS STORYTELLING

- Original grunge-inspired compositions
- Live performance sequences
- Music triggers time travel (magical realism)
- Healing through authentic expression
- Strong soundtrack potential



BUDGET & FINANCING

BUDGET: \$863,000

WHY THIS BUDGET WORKS:

- Intimate character dramedy
- Limited locations (2 time periods)
- Modest effects (magical realism)
- 3 primary characters
- Music integration adds value

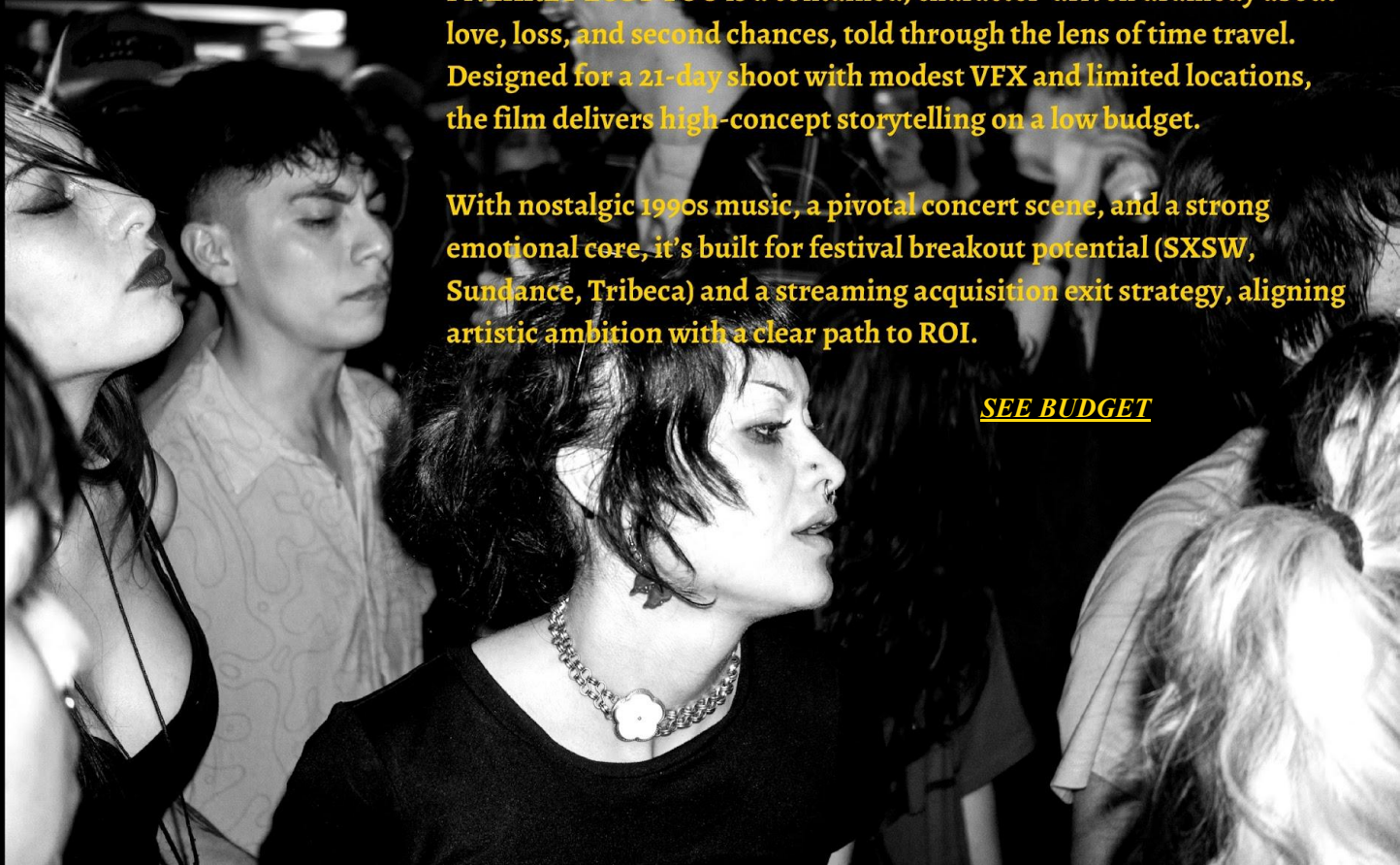
FINANCING STRATEGY:

- Independent film investors
- Music industry partnerships
- State tax incentives

I NEARLY LOST YOU is a contained, character-driven dramedy about love, loss, and second chances, told through the lens of time travel. Designed for a 21-day shoot with modest VFX and limited locations, the film delivers high-concept storytelling on a low budget.

With nostalgic 1990s music, a pivotal concert scene, and a strong emotional core, it's built for festival breakout potential (SXSW, Sundance, Tribeca) and a streaming acquisition exit strategy, aligning artistic ambition with a clear path to ROI.

[SEE BUDGET](#)



Contact / Additional Resources

Film website: <https://www.inearlylostyou.com>

Mobile: 310-967-9026

Email: tomdemar@gmail.com

Thank you for your interest and support in our film project!

Why I wrote this: [inearlylostyou.com/statement](https://www.inearlylostyou.com/statement)



- [Concept Trailer](#): Watch the concept [concept trailer](#) showcasing the film's tone and story.
- [One-Pager](#): Concise summary highlighting key themes and characters.
- [Music Samples](#): Original grunge-inspired tracks featured in the film.
- [Story Summary](#): Detailed narrative overview outlining plot and character arcs.
- [Complete Screenplay](#): Available upon request for in-depth reading and evaluation.