

I Nearly Lost You



A Time-Travel Drama of Mother-Daughter Reconciliation and Music

A '90s mom travels to the future to save the daughter she gave up for adoption but reconciliation comes at too high a cost.

90-second concept trailer (click on image)



Film Overview

I NEARLY LOST YOU follows a resilient mother from the 1990s who embarks on a journey to the future to find and help the daughter she gave up for adoption. *They are the same age*. Their reunion is filled with emotional challenges and revelations as they navigate the complexities of their past and present. However, the path to reconciliation demands profound sacrifices and forces them to confront difficult choices about family, identity, and healing across time.



Lead Character: Rachel

Rachel is a street-smart and resilient woman who grew up in the 1990s, having survived a traumatic childhood through sheer determination and grit. She works hard and takes nothing for granted, embodying a survival instinct that has shaped her tough yet caring nature. Despite her strength, Rachel's vulnerability lies in her deep connection to music, which influences her emotions and decisions. Facing an impossible choice, Rachel's journey highlights the complexity of a mother's love intertwined with the challenges of reconciling her past and present.

Lead Character: Ann

Ann is the present-day daughter, grappling with loneliness, severe anxiety, and existential dread despite her privileged background. Having grown up wealthy and successful, she made the bold decision to leave corporate law and become a bartender, seeking a more meaningful life. However, Ann struggles with digital isolation, feeling disconnected despite constant online interactions. Her journey centers on a profound need for authentic human connection, which becomes even more poignant when she discovers the mother she never knew, opening the door to healing and reconciliation.



Why Now?

"73% of Gen-Z report feeling alone." -Forbes

Loneliness Epidemic

73% of Gen Z report feeling alone often, with studies showing up to 80% experiencing loneliness in the past year, far exceeding rates in older generations.

Digital Isolation Problem

"Gen-Z are hyperconnected in the virtual world but socially disconnected...digital interactions have failed to replace the need to connect on an emotional level." -Forbes

Workplace & Social Impact

Gen Z also experiences higher feelings of isolation in the workplace, compounding the pervasive loneliness affecting their mental health and wellbeing.

Our Story's Solution

"I Nearly Lost You" offers an authentic narrative of connection across time, addressing emotional isolation through a heartfelt mother-daughter journey and the healing power of music.

High Prevalence of Loneliness: Multiple reports indicate that a substantial majority of Gen Z report feeling lonely:

A 2024 GWI study found 80% of Gen Z felt lonely in the past 12 months, compared to 45% of baby boomers.

A 2022 Psychology Today article highlighted that 73% of Gen Z feel alone either sometimes or always.

Other sources cite similar figures, with some studies showing around 73% to 79% experiencing loneliness.

"Loneliest Generation": Gen Z has been described as the "loneliest generation."

Workplace Isolation: Gen Z also reports feeling more isolated than other age groups in the workplace.

Universal Themes

Music as Healing

Raw, authentic '90s grunge music serves as a powerful tool for emotional healing and expression throughout the story.



Connection vs. Isolation

Highlights the contrast between digital disconnection and the need for genuine human relationships in a hyperconnected world.



Second Chances

Explores the profound cost and emotional weight of attempting to change the past and seek redemption.



Family Trauma

Addresses complex issues like adoption, broken homes, and the journey toward forgiveness and reconciliation.





TARGET AUDIENCE

PRIMARY AUDIENCE Ages 18-34

Seeking authentic connection stories
Dealing with family trauma/adoption
Music lovers and indie film fans

SECONDARY AUDIENCE Ages 34-54+

Lived through '90s grunge era
Nostalgia seekers
Parents relating to family themes

The Nostalgia Factor

A grainy, high-contrast black and white photograph serves as the background. It depicts a person in a dark, textured environment, possibly a forest or cave. The person's face is partially visible in profile, with their hand near their face, suggesting a contemplative or emotional state. The lighting is dramatic, with strong highlights and deep shadows, creating a moody and atmospheric effect.

The '90s grunge culture represents a powerful and largely untapped source of nostalgia for contemporary audiences. This era's authentic elements — including live music performances, the raw and gritty grunge aesthetic, pre-digital authenticity, and emotionally charged expression — create a unique atmosphere that has yet to be fully explored in nostalgia films. By tapping into this cultural moment, the film offers a fresh, genuine experience that connects deeply with both those who lived through the era and younger generations seeking a more authentic emotional connection beyond digital interactions.

Tone, Genre & Market Comparables

Film Tone

A sci-dramedy combining humor, emotion, and musical elements that deepen the narrative and character connection.



Genre

Blends magical realism, drama, and musical storytelling to explore themes of family, time travel, and healing.



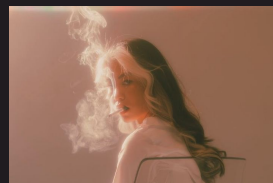
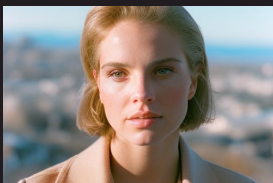
Comparable Films

Shares qualities with **About Time** (\$87M), **The Time Traveler's Wife** (\$101M), and **Yesterday** (\$153M) for time-travel and musical fusion.



Emotional Journey

Echoes the intimate mother-daughter relationship and emotional depth, reconciliation and personal growth in **Lady Bird** (\$78.9M).



Visual Style

Present Day

Clean, sharp digital cinematography captures the present-day world, emphasizing modern disconnection through sterile environments, cooler tones, and minimalist symmetrical framing to contrast with the past.



1990s Timeline

Featuring authentic film grain and lived-in locations, the 1990s scenes embrace grunge aesthetics with raw textures, saturated colors, and a nostalgic, gritty feel that reflects the era's spirit and emotional intensity.



Time Travel Sequences

Surreal and dreamlike visual effects create seamless transitions between eras, blending elements of magical realism with fluid, ethereal imagery to symbolize the emotional and temporal connection between characters.

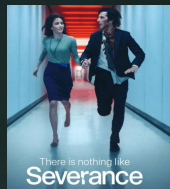


Professional Validation



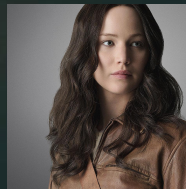
Roadmap Writers Coverage

Rated "RECOMMEND" for its unique melancholy and heartfelt approach, setting it apart from typical time travel dramedies with a strong emotional core. inearlylostyou.com/review



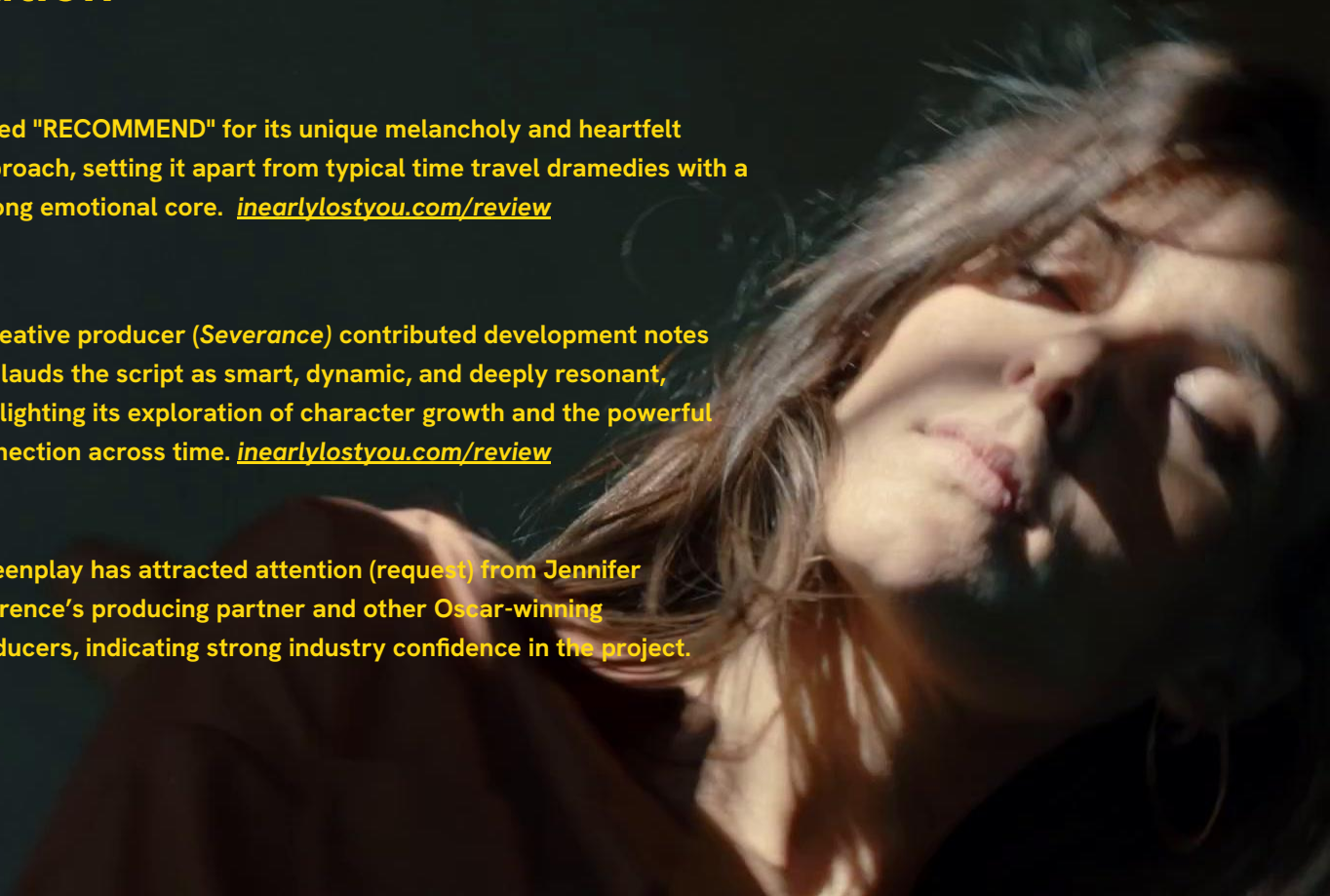
Creative Producer Development

A creative producer (*Severance*) contributed development notes and lauds the script as smart, dynamic, and deeply resonant, highlighting its exploration of character growth and the powerful connection across time. inearlylostyou.com/review



High-Profile Interest

Screenplay has attracted attention (request) from Jennifer Lawrence's producing partner and other Oscar-winning producers, indicating strong industry confidence in the project.



The Emotional Journey

Heartfelt Emotion

The film captures the raw and intimate emotions of a mother and daughter reconciling across time, emphasizing vulnerability, love, and personal growth.

Humor & Levity

Balancing the drama, the tone incorporates moments of humor and lightness, reflecting the quirky, relatable aspects of family dynamics across generations and time.

Magical Realism

Music serves as a magical realism element, triggering time travel and emotional transformation, blending the real and surreal to deepen the narrative impact.

Authentic & Nostalgic

Rooted in the '90s grunge culture, the tone evokes nostalgia through authentic music, gritty visuals, and a lived-in aesthetic that resonates with multiple generations.



MUSIC INTEGRATION

not just soundtrack — plot device

MUSIC AS STORYTELLING

- Original grunge-inspired compositions
- Live performance sequences
- Music triggers time travel (magical realism)
- Healing through authentic expression
- Strong soundtrack potential



BUDGET & FINANCING

BUDGET: \$3 MILLION

WHY THIS BUDGET WORKS:

- Intimate character dramedy
- Limited locations (2 time periods)
- Modest effects (magical realism)
- 3 primary characters
- Music integration adds value

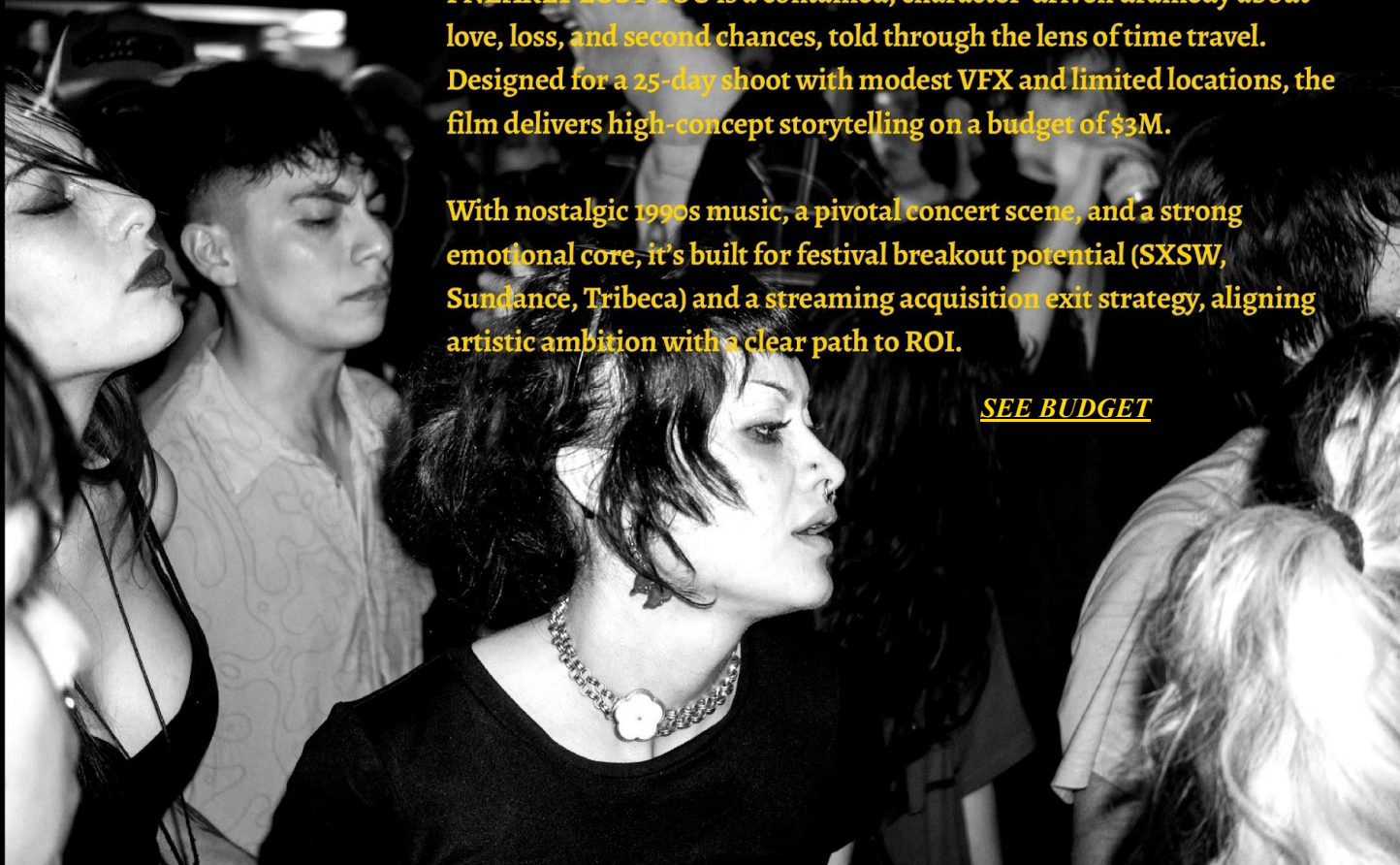
FINANCING STRATEGY:

- Independent film investors
- Music industry partnerships
- State tax incentives

I NEARLY LOST YOU is a contained, character-driven dramedy about love, loss, and second chances, told through the lens of time travel. Designed for a 25-day shoot with modest VFX and limited locations, the film delivers high-concept storytelling on a budget of \$3M.

With nostalgic 1990s music, a pivotal concert scene, and a strong emotional core, it's built for festival breakout potential (SXSW, Sundance, Tribeca) and a streaming acquisition exit strategy, aligning artistic ambition with a clear path to ROI.

[SEE BUDGET](#)



Production Readiness



Professional Screenplay

Extensively developed and industry-reviewed screenplay with premier coverage and expert notes.

Concept Trailer

A compelling visual teaser available online to showcase the film's tone and story potential.

Character Portraits & Music Compositions

Detailed character breakdowns and original grunge-inspired music compositions by the writer/composer.

Promotional Materials

Includes website, pitch deck, and mixtape to engage investors and audiences effectively.

Festival Strategy

The film aims to premiere at top-tier festivals renowned for their support of music-driven and indie films including SXSW, Sundance, Tribeca, and the Toronto International Film Festival (TIFF).

SXSW is a key target due to its strong emphasis on music integration and innovative storytelling, making it an ideal launchpad for the film's unique blend of sci-dramedy and musical elements.

Awards potential is high, with specific attention on Original Music/Song categories, Breakthrough Performance accolades, and recognition from the Independent Spirit Awards, which celebrate independent filmmaking excellence.

This festival strategy is designed to build momentum, attract critical acclaim, and position the film for successful distribution and audience engagement.



Distribution Plan

Multi-Platform Release Strategy

The film targets theatrical platform releases in key music-centric cities and streaming platforms with strong binge-watch potential to reach diverse audiences.



Revenue Streams & Merchandising

Revenue includes box office, streaming licensing, music publishing, and merchandise featuring '90s nostalgia products to enhance fan engagement and monetization.



Competitive Advantages

Fresh Time Travel Narrative

Combines sci-dramedy elements with heartfelt mother-daughter reconciliation, providing a unique and emotionally rich twist on the time travel genre.

Untapped '90s Grunge Market

The film explores the largely unexploited nostalgia of '90s grunge culture, offering fresh emotional and cultural resonance for audiences craving authenticity.

Addresses Isolation Epidemic

Tackles contemporary issues of digital disconnection and loneliness, especially prevalent in Gen Z, through a narrative of authentic human connection.



Music as Plot Device

Music drives the story, not just the soundtrack—original grunge-inspired songs trigger magical realism and character transformation.

Cross-Generational Appeal

Engages both younger audiences facing modern alienation and older viewers nostalgic for the '90s, bridging age gaps with universal themes.

Writer's Authentic Connection

The story is rooted in the writer's personal experience with broken family and '90s music, lending depth and sincerity to the narrative.

A Fresh Take



I NEARLY LOST YOU taps into the largely unexplored '90s grunge culture, offering authentic music and aesthetic elements that evoke nostalgia for multiple generations.

The story centers on a heartfelt mother-daughter reconciliation across time, blending sci-dramedy with musical storytelling to explore family trauma, healing, and second chances. Music acts as both soundtrack and magical realism catalyst, driving time travel and emotional change.

This fresh narrative device creates strong cross-generational appeal and addresses digital isolation, resonating with audiences craving authentic connection.

Closing Statement



"Why am I always staring at these little electronic devices? If I'd had kids, what would I want to share with them now that they'd have grown?"

Tom Demar, writer

This story is a heartfelt exploration of the bonds that transcend time and the music that heals us all. It reflects a journey of reconciliation, second chances, and the search for authentic connection in a digitally isolated world. Through the emotional portraits of its characters, the film invites viewers to feel the profound impact of family, memory, and the timeless power of music.

Additional Resources



- [Concept Trailer](#): Watch the concept [concept trailer](#) showcasing the film's tone and story.
- [One-Pager](#): Concise summary highlighting key themes and characters.
- [Music Samples](#): Original grunge-inspired tracks featured in the film.
- [Story Summary](#): Detailed narrative overview outlining plot and character arcs.
- [Complete Screenplay](#): Available upon request for in-depth reading and evaluation.

Contact Information



Film website: <https://www.inearlylostyou.com/>

Mobile: 310-967-9026

Email: tomdemar@gmail.com

Thank you for your interest and support in our film project!